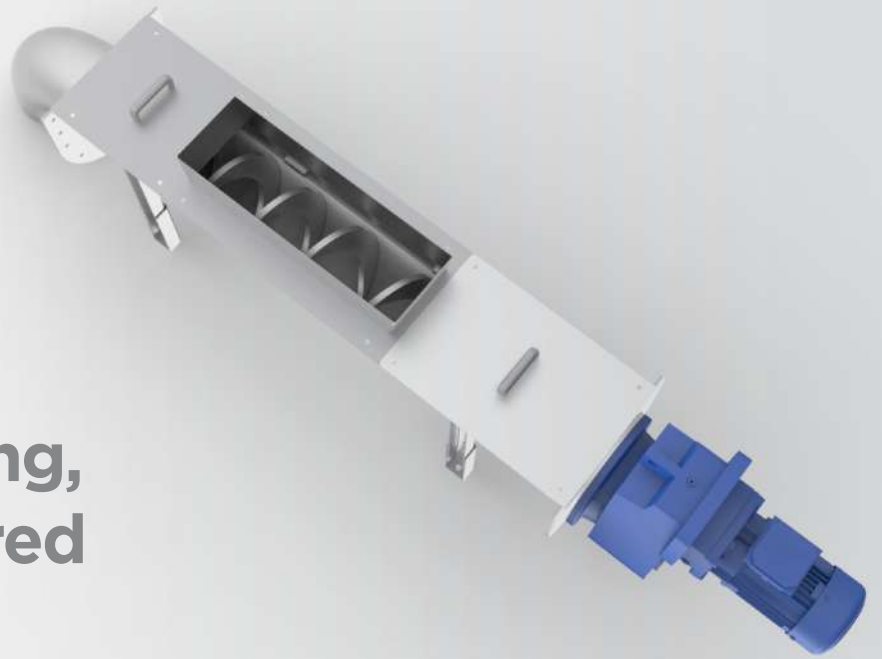
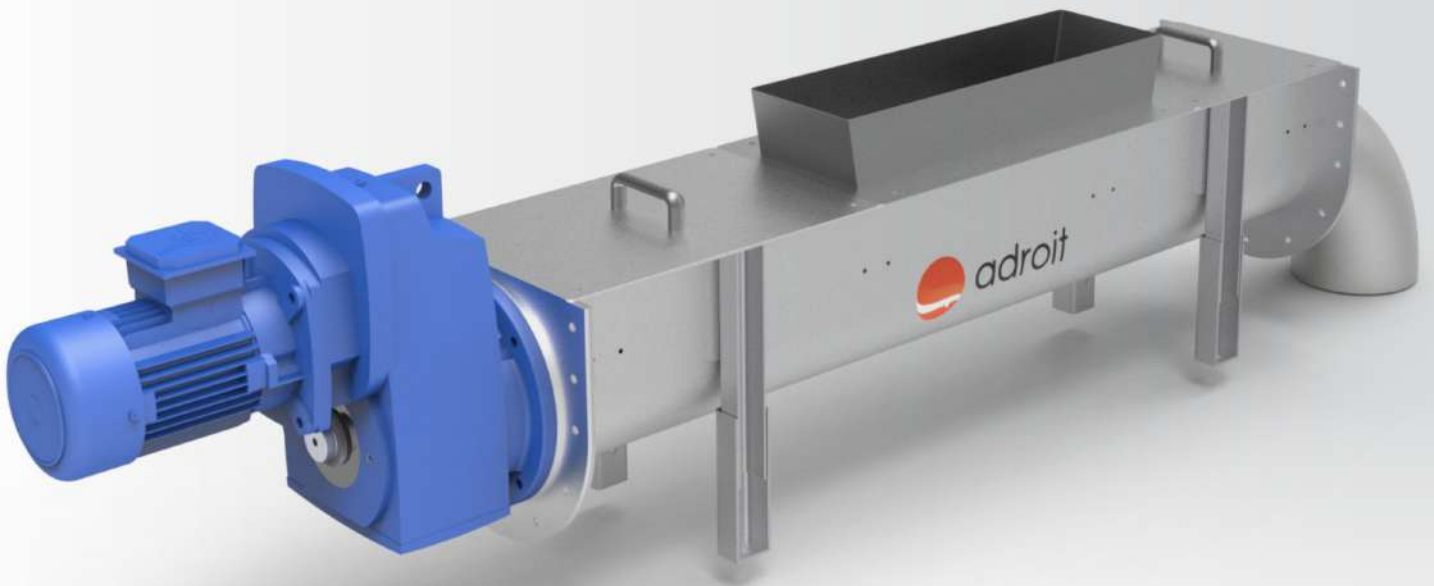


An efficient way
to move screening,
grit and dewatered
sludge.



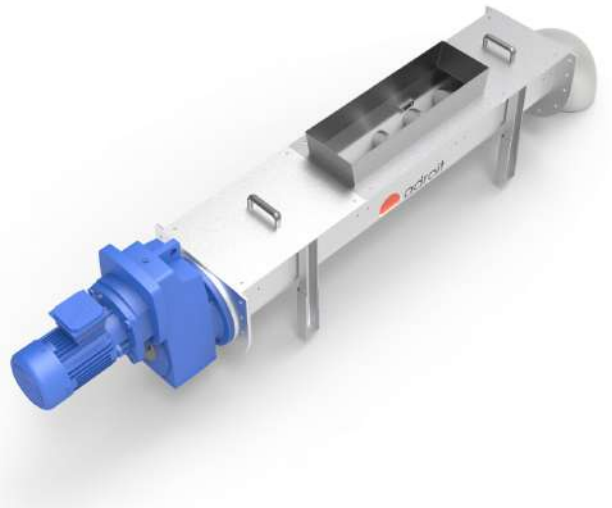
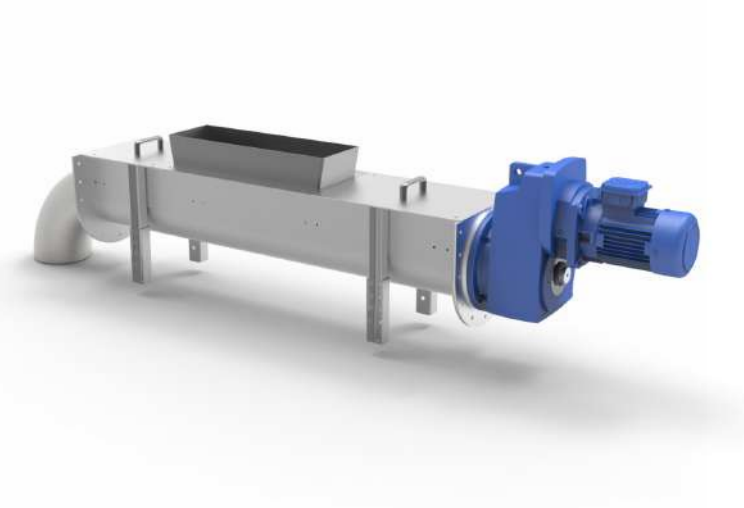
SCREW CONVEYOR



35 YEARS
of excellence
★ SINCE 1987 ★



adroit
Water Technology Solutions



SCREW CONVEYOR

Application: Screw conveyor is used for conveying sludge or solid matter like screenings and grit. It usually consists of a tube containing rotating spiral blade coiled around a shaft, driven at one end and held at the other or a shaft-less screw, driven at one end and free at the other.

Features:

- > Ideal for handling dewatered biosolids, grit and screenings.
- > Lower energy consumption.
- > Enclosed design to reduce odors.
- > Flexibility in installation - horizontal, vertical and inclined.

Application Area:

- > Solid waste transport
- > Grit and sludge conveying
- > Industrial bulk conveying of semi solid material

Dimension and Manufacturing:

Diameter: 220 mm to 500 mm

Length: Upto 15 M

Material: Frame – SS304/SS316,

Screw – SS304/SS316,

Lining – UHMWPE/HDPE/Hardox 400.

